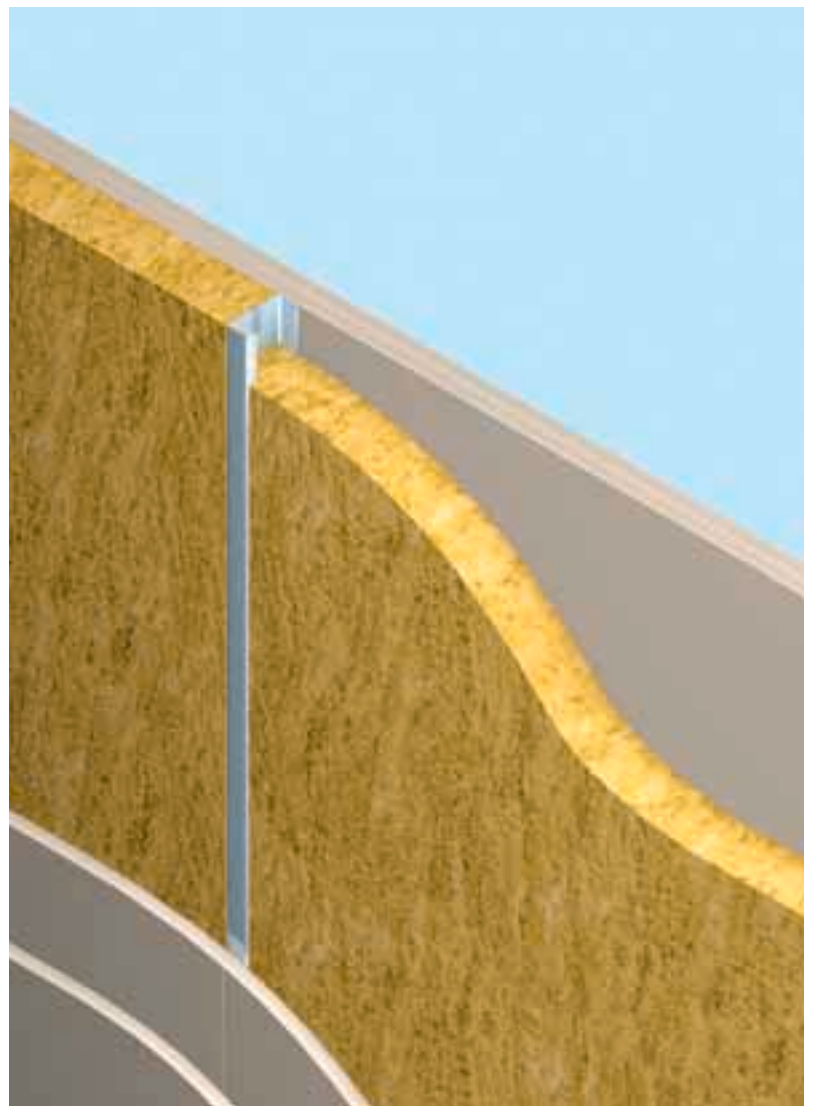


Acoustic Partition Slab

An easy-to-fit, semi-rigid slab for acoustic metal partitions

Rockwool Acoustic Partition Slab is a high quality resin bonded semi-rigid slab, designed to combine optimum acoustic and fire performance with easy fitting into metal partitions.



Advantages

- Excellent acoustic absorption
- Simple and fast installation
- Optimum dimensions to suit metal stud partitions
- Fire safe
- No sagging or slumping
- New slimmer 25 mm thickness



Complies with
Approved Document E 2003 edition

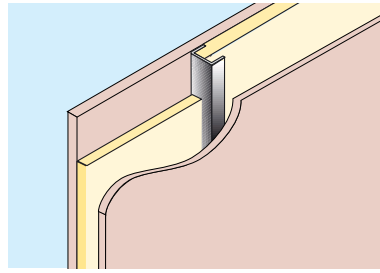
Meeting Approved Document E (ADE)

The new Approved Document E (2003 edition) introduces, for the first time, performance criteria for internal walls. This is based on laboratory rating (R_w) for which a minimum value for airborne sound insulation of **40 dB** is required. ADE Section 5 internal wall type B gives examples of metal stud construction that should achieve this value.

New 25 mm thickness using standard 12.5 mm wallboard

The new slimmer 25 mm thickness Acoustic Partition Slab is available to comply with ADE-part E2.

This has been laboratory tested using **standard 12.5 mm wallboard** (8 Kg/m²) in a 50 mm metal stud and achieved **R_w 41 dB** (BRE Lo3 185).



Metal stud wall construction

ADE Section 5, internal wall type B R_w 40 dB

- Minimum 48 mm lightweight metal studs @ 600 mm centres.
- Rockwool Acoustic Partition Slab (min) 25 mm.
- Single layer plasterboard (10 Kg/m²) both sides.

Exceeding Approved Document E

Superior solutions for enhanced performance

These solutions have been laboratory tested to give a superior acoustic performance where a high level of airborne sound insulation is required over and above the minimum regulations of Approved Document E.

Enhanced performance using 50 mm studs

Where space is at a premium, Rockwool provides a 47 mm thick Acoustic Partition Slab to fill between 50 mm wide metal studs.

Weighted sound reduction index R_w 43 dB

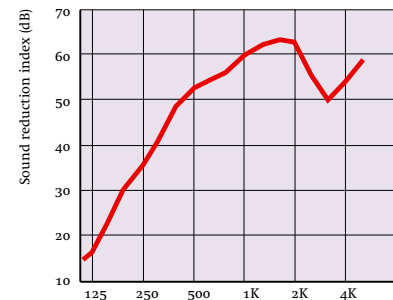
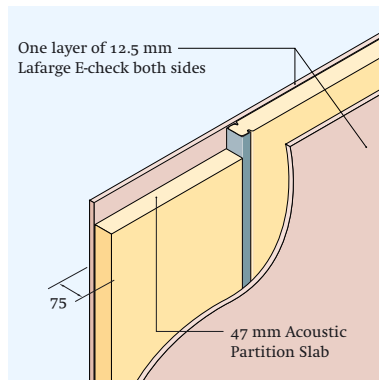
Fire resistance 30 minutes

Studs 50 mm width @ 600 mm centres

Facings One layer of 12.5 mm Lafarge E-check Wallboard (10 Kg/m²) both sides

Insulation 47 mm Acoustic Partition Slab

Report No BTC 10192A



Weighted sound reduction index: R_w 43 dB
Test report No. BTC 10192A

Typical office, conference or board room partitions

(a)

Weighted sound reduction index R_w 54 dB

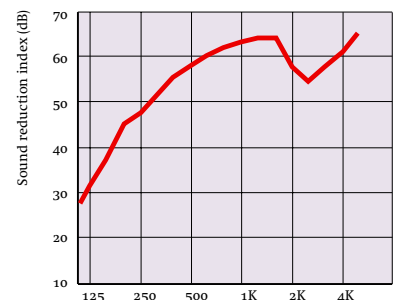
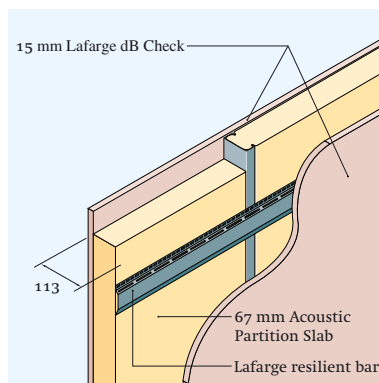
Fire resistance 30 minutes

Studs 70 mm width @ 600 mm centres

Facings One layer of 15 mm Lafarge dB Check one side. Other side one layer of 15 mm Lafarge dB Check (13 Kg/m²) fixed to resilient bar.

Insulation 67 mm Acoustic Partition Slab

Report No BTC 10189A



Weighted sound reduction index: R_w 54 dB
Test report No. BTC 10189A

(b)

Weighted sound reduction index R_w 55 dB

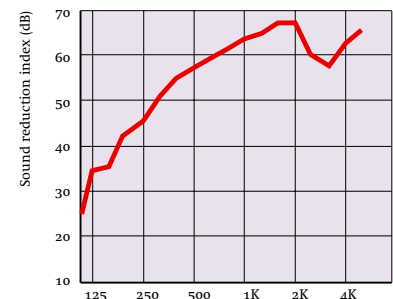
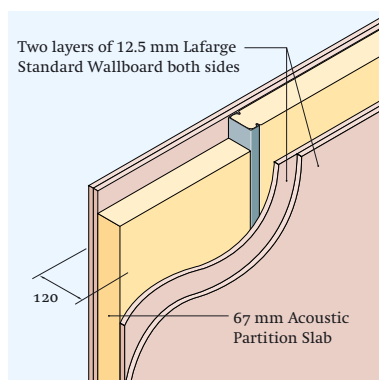
Fire resistance 60 minutes

Studs 70 mm width @ 600 mm centres

Facings Two layers of Lafarge Standard Wallboard (16 Kg/m²) both sides

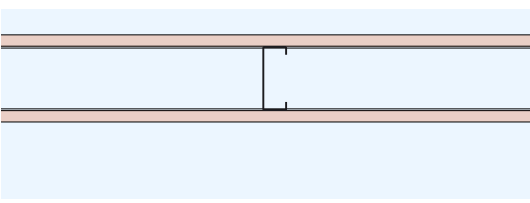
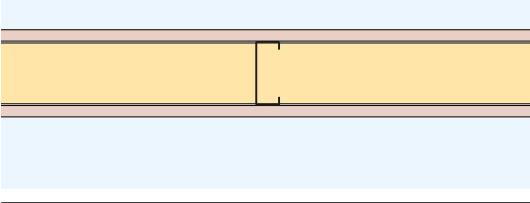
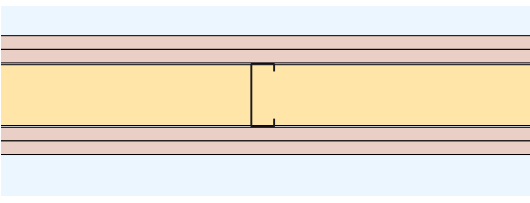
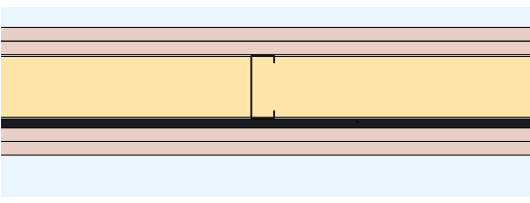
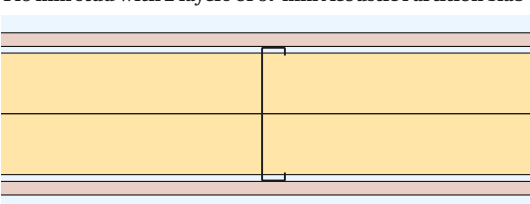
Insulation 67 mm Acoustic Partition Slab

Report No BTC 10191A



Weighted sound reduction index: R_w 55 dB
Test report No. BTC 10191A

Metal Stud Partition structure

	Specification	Nominal thickness (mm)	Weighted sound reduction index (R _w dB)	Fire Resistance (minutes)
 <p>70 mm stud. No insulation</p>	Studs 70 mm width @ 600 mm centres. Facings One layer 12.5 mm Lafarge E-check (10 Kg/m ²) both sides No insulation	95	36	30
 <p>70 mm stud with 67 mm Acoustic Partition Slab</p>	As above with 67 mm Acoustic Partition Slab Report No BTC 10190A	95	44	30
 <p>70 mm stud with 2 layers of 15 mm Lafarge dB Check</p>	Studs 70 mm width @ 600 mm centres. Facings Two layers of 15 mm Lafarge dB Check both sides (26 Kg/m ²) with staggered joints Insulation 67 mm Acoustic Partition Slab Report No BTC 10183A	132	57	90
 <p>70 mm stud with wallboards fixed to resilient bar</p>	Studs 70 mm width @ 600 mm centres. Facings Two layer 15 mm Lafarge dB Check (26 Kg/m ²) sound resisting one side. Other side two layers of 15 mm Lafarge dB Check (26 Kg/m ²) fixed to resilient bar. Both sides with staggered joints Insulation 67 mm Acoustic Partition Slab Report No BTC 10187A	143	63	90
 <p>146 mm stud with 2 layers of 67 mm Acoustic Partition Slab</p>	Studs 146 mm width @ 600 mm centres. Facings One layer 15 mm Lafarge Firecheck Wallboard both sides (12 Kg/m ²) Insulation 2 layers of 67 mm Acoustic Partition Slab Report No BTC 10193A	176	53	60

Absorption coefficients

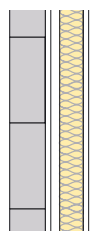
The structure of Rockwool makes it an ideal product for use as a sound absorber. The absorption coefficients are characteristically high over a wide range of frequencies (see table opposite).

Material	Thickness (mm)	Mounting	Frequency (Hz)					
			125	250	500	1K	2K	4K
Acoustic Partition Slab	47	Direct	0.20	0.50	0.85	1.00	1.00	1.00
Acoustic Partition Slab	67	Direct	0.30	0.70	1.00	1.00	1.00	1.00

Test report numbers BTC 10264A, BTC 10265A



Separating wall utilising existing masonry structure



ADE Section 4, wall treatment 1

Minimum D_{nT,w} + C_{tr} 43 dB

- 100 mm (min) existing solid masonry wall plastered on both faces.
- Independent metal stud positioned min. 10 mm from separating wall.
- Rockwool Acoustic Partition Slab 47 mm (min)
- 2 layers of plasterboard (min 20 Kg/m²)

Standards and approvals

Rockwool Acoustic Partition Slab complies with the requirements of BS EN 13162: 2001 Thermal Insulation products for buildings Factory made mineral wool (MW) products specification.

Description

Acoustic Partition Slab is designed specifically to suit installation between metal studs at 600 mm centres. The dimensions of the product have been optimised accordingly.

Dimensions

Standard size: 1200 × 590 mm
Thicknesses: 25, 47 and 67 mm

Performance and properties

Environment

Rockwool insulation products are, and always have been, free from gases that are harmful to the environment, such as CFCs, HCFCs, HFCs, pentane or any gases that have Ozone Depletion Potential (ODP) or Global Warming Potential (GWP).

Fire classification

Acoustic Partition Slab achieves a reaction to fire classification of A1 as defined in BS EN 13501-1.

Work on site

Fixing

Acoustic Partition Slabs are light and easy to cut with a sharp knife.

Metal stud partitions

For installation between metal studs, at 600 mm centres, insert Acoustic Partition Slabs using the standard 590 mm width, and friction fit.

Health and safety

Current HSE 'CHIP' Regulations and EU directive 97/69/EC confirm the safety of Rockwool mineral wool; Rockwool fibres are not classified as a possible human carcinogen.

The maximum exposure limit for mineral wool is 5mg/m³, 8 hour time-weighted average.

A Material Safety Data Sheet is available from the Rockwool Marketing Services Department to assist in the preparation of risk assessments, as required by the Control of Substances Hazardous to Health Regulations (COSHH).

Maintenance

Once installed Acoustic Partition Slab needs no maintenance and will neither slump nor sag during the lifetime of the partition.

Proprietary materials

Information on Lafarge Wallboards and Resilient Bars is available from Lafarge Plasterboard Ltd. Tel 01275 377789

Handling and storage

Rockwool Acoustic Partition Slabs are shrink wrapped in polyethylene for short term protection. For long term protection they should be stored indoors or under a waterproof covering.

Workmanship

To achieve satisfactory sound reduction, it is important to ensure that the separating wall or partition is correctly constructed. Acoustic Partition Slabs must be tightly butted at joints, leaving no gaps.

Typical specification clause

Infill within stud partition

The acoustic infill is to be Rockwool Acoustic Partition Slab, 25/47/67* mm thick, installed to a tight fit between the metal studs.

* Delete as required



SoundPro range of acoustic solutions

Acoustic Partition Slab is a part of the Rockwool SoundPro range of acoustic solutions. Further information on the SoundPro range is available from Rockwool Marketing Services on 01656 862621.

Technical Helpline



Technical advice relating to Acoustic Partition Slab is available from the Rockwool Technical Helpline Services Department on 0871 222 1780.

Rockwool Limited reserves the right to alter or amend the specification of products without notice as our policy is one of constant improvement.

The information contained in this data sheet is believed to be correct at the date of publication. Whilst Rockwool will endeavour to keep its publications up to date, readers will appreciate that between publications there may be pertinent changes in the law, or other developments affecting the accuracy of the information contained in this data sheet.

The above applications do not necessarily represent an exhaustive list of applications for Acoustic Partition Slab. Rockwool Limited does not accept responsibility for the consequences of using Acoustic Partition Slab in applications different from those described above. Expert advice should be sought where such different applications are contemplated, or where the extent of any listed application is in doubt.

ROCKWOOL
FIRESAFE INSULATION

Rockwool Limited
Pencoed, Bridgend. CF35 6NY

Rockwool Technical Helpline
T 0871 222 1780
E info@rockwool.co.uk
www.rockwool.co.uk