



E-Cousti Joist Cap

The Joist Cap is a new addition to the E-Cousti range.

The Joist Cap has been engineered as a Part E compliant acoustic joist treatment, to save the developer time and money. It can be used in both new build and refurbishment projects, for timber and masonry builds.

Proven to be the most effective means of achieving superior sound attenuation, the mass of the structure is placed above the resilient layer. The product is then simply placed over the traditional joists before the mass of the floor is added. The Joist Cap is suitable for both rough-cut and planed joists.

BRE Test Results

Rw + Ctr dB	Ln,w dB
51	55

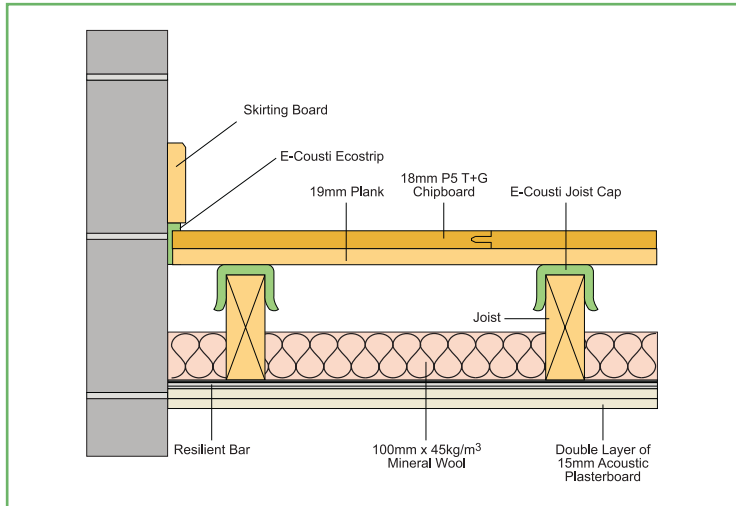
Testing at the BRE - 234174: L207 -005 and L207-006.

Testing was carried out without plank, the addition of plank would significantly improve the acoustic performance of the system.

E-Cousti Joist Cap Features and Benefits

- Size – 12mm x 50mm x 2m
- Density – 30kg/m³
- Exceeds Part E requirements
- Does not require specialist knowledge
- Easy to install
- Lightweight and easy to transport
- Low density polyethylene foam with acoustically superior gas impregnated additives
- CFC, HCFC free, zero ODP
- Chemically and physically stable material
- Very low toxic fume and smoke emissions
- 100% recyclable
- Moisture resistant
- Rot proof

Typical construction using the E-Cousti Joist Cap



- P5 18mm tongue and groove chipboard floor
- 19mm plank (optional but will significantly improve performance)
- 100mm E-Cousti Ecostrip around perimeter
- E-Cousti Joist Cap
- Joists
- 100mm 45kg/m³ mineral wool
- Resilient bars
- 2 layers of 15mm acoustic plasterboard

Installation Guide

- Care should be taken to comply with all relevant Safety and Building Regulations.
- The E-Cousti Joist Cap can be fitted from either above or below the joists and before the joists are installed.
- All joints must be finished with E-Cousti Fix and Seal intumescent and acoustic sealant.
- The jaws are slightly tapered in to ensure a tight friction fit. Simply open the jaws and sit the Joist Cap over the joist ensuring the base is located tightly with the joist surface.
- In all situations E-Cousti Ecostrip perimeter flanking strip must be laid in accordance with the installation instructions in E-Cousti Technical Installation Guide No. 6 so the floating floor is fully isolated from the structural floor and walls. (For reference visit www.e-cousti.co.uk).

Other E-Cousti solutions are available using unique E-Cousti acoustic products combined with traditional materials. These have been designed to be lightweight, low footprint and simple to construct. See the E-Cousti Solutions Guide for comprehensive details.

For your local stockists, further information and help with sales enquiries please call:

0114 285 7138 | 0114 285 6492

Alternatively visit: www.e-cousti.co.uk



www.sheffins.co.uk



www.warren.co.uk



www.solentinsulation.co.uk



www.insulationdistributors.ie



www.kitsonsthermal.co.uk



www.woodsinsulation.co.uk