



Class 0 Armaflex®

Professional insulation that prevents condensation and energy losses

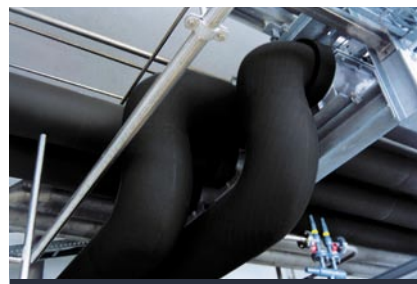
- » Built-In Vapour Barrier Prevents Condensation
- » Reduce Energy Losses Up to 87%
- » Ease of application







Class O Armaflex is the flexible, closed cell, elastomeric, nitrile rubber insulation that offers reliable protection against condensation and effectively prevents energy loss.

A highly efficient method of insulating hot and cold water services, chilled water lines, heating systems, air conditioning duct work and refrigerated pipe work for frost protection, energy conservation and condensation control. Armaflex is dust free, fibre free and CFC free with an ODP of zero which means an environmentally friendly product.

- » Built in vapour barrier prevents condensation
- » Reduces energy losses by up to 87%
- » Lightweight and flexible, quick and easy installation with low maintenance requirements, resulting in time and cost savings
- » Excellent resistance to the effects of ozone, oil and chemicals (consult product test list)



Class O Armaflex®

Technical Data		Values	Remarks
Material	Foamed nitrile rubber		
Max. Surface Temperature	+105° C		For min. temperatures between -50° C and - 200° C, please consult our Technical Department. Tel. 0161 287 7100 · Fax 0161 633 2685
Max. Temperature for Flat Surface	+85° C		
Min. Surface Temperature	-50° C		
Thermal Conductivity at 0° C	0.034 W/(m · K)		Test acc. to EN ISO 8497
Thermal Conductivity at +20° C	0.036 W/(m · K)		
Thermal Conductivity at +40° C	0.038 W/(m · K)		
Water Vapour Permeability	Moisture Resistance Factor μ 7,000 BS EN ISO 9346:1996 $2.79 \cdot 10^{(-14)}$ kg/(m s Pa)		
Water Absorption	0.2% by volume		Test acc. ASTM C 209
Surface Spread of Flames	Class 1		Surface Spread of Flame acc. BS 476 Part 7: 1997 Fire Propagation acc. BS 476 Part 6: 1989
Fire Propagation	Total Index Performance (I) ≤ 12 Sub Index (i_1) ≤ 6		Test results for Surface Spread of Flames and Fire Propagation meets <ul style="list-style-type: none"> • Building Regulations 2000 (England and Wales) • Building Standards (Scotland) Regulations 1990 • Building Regulations 2000 (Northern Ireland) • Building Regulations 1997 (Republic of Ireland) for the Class O fire category Tested in accordance with UL 94
Fire Performance acc. to Building Regulation	Class O		
Reaction to fire	Self-extinguishing, does not drip		
Noise Reduction	Sound Absorption Coefficient ISO 354:2003 up to 0.8		Also suitable for use in the prevention of sound passage
Resistance to	Building Materials Very Good Chemicals Consult Product Test List Ozone Very Good		   
Health Aspects	Dust & Fibre Free		

Outdoor applications: Class O Armaflex should be painted with Armafinish FR paint to the recommended thickness within 3 days. Two or more coats may be required.



Armacell UK Limited
 Mars Street Oldham, Lancs. OL9 6LY
 Tel 0161 287 7100 · Fax 0161 633 2685
 www.armacell.com/uk · info.uk@armacell.com



All statements and technical information are based on results obtained under typical conditions. It is the responsibility of the recipient to verify with us that the information is appropriate for the specific use intended by the recipient. For updates to this document please refer to our website www.armacell.com/uk.

CLASS O ARMAFLEX Tubes

Length 2 m, colour black

Copper pipe Cu			Iron and steel pipe Fe		Min ID mm	6 mm Nominal thickness			9 mm Nominal thickness		
NB inch	Nom OD inch	Nom OD mm	NB inch	Nom OD mm		Nom thick- ness	Reference	m / carton	Nom thick- ness	Reference	m / carton
	1/4	6			6.5	6mm	C0-06X006	544			
	1/4	6			9.5				9 mm	C0-09X006	352
	3/8	10			10.5	6mm	C0-06X010	400	9mm	C0-09X010	280
3/8	1/2	12			12.5	6mm	C0-06X012	336	9 mm	C0-09X012	240
1/2	5/8	15			16.0	6mm	C0-06X015	266	9 mm	C0-09X015	192
5/8	3/4				20.0	6mm	C0-06X020	210	9 mm	C0-09X020	156
3/4	7/8	22	1/2	21.3	22.5	6mm	C0-06X022	172	9 mm	C0-09X022	140
1	1 1/8	28	3/4	26.9	29.0	6mm	C0-06X028 #	112	9 mm	C0-09X028	98
1 1/4	1 3/8	35	1	33.7					9 mm	C0-09X035	84
1 1/2	1 5/8	42	1 1/4	42.4					9 mm	C0-09X042	60
			1 1/2	48.3					9 mm	C0-09X048	56
2	2 1/8	54							9 mm	C0-09X054	54
			2	60.3					9 mm	C0-09X060	42

Copper pipe Cu			Iron and steel pipe Fe		Min ID mm	13 mm Nominal thickness			19 mm Nominal thickness		
NB inch	Nom OD inch	Nom OD mm	NB inch	Nom OD mm		Nom thick- ness	Reference	m / carton	Nom thick- ness	Reference	m / carton
	1/4	6			9.5	13mm	C0-13X006	226			
	3/8	10			10.5	13 mm	C0-13X010	188	19mm	C0-19X010	104
3/8	1/2	12			12.5	13 mm	C0-13X012	162	19mm	C0-19X012	92
1/2	5/8	15			16.0	13 mm	C0-13X015	136	19mm	C0-19X015	78
5/8	3/4				20.0	13 mm	C0-13X020	112	19mm	C0-19X020	70
3/4	7/8	22	1/2	21.3	22.5	13 mm	C0-13X022	104	19mm	C0-19X022	64
1	1 1/8	28	3/4	26.9	29.0	13 mm	C0-13X028	78	19mm	C0-19X028	50
1 1/4	1 3/8	35	1	33.7	35.5	13 mm	C0-13X035	60	19mm	C0-19X035	40
1 1/2	1 5/8	42	1 1/4	42.4	43.5	13 mm	C0-13X042	56	19mm	C0-19X042	32
			1 1/2	48.3	49.0	13 mm	C0-13X048	40	19mm	C0-19X048	30
2	2 1/8	54			55.0	13 mm	C0-13X054	42	19mm	C0-19X054	24
			2	60.3	61.0	13 mm	C0-13X060	36	19mm	C0-19X060	24
2 1/2	2 5/8	67			68.0	13 mm	C0-13X067	34	19mm	C0-19X067	20
2 13/16	3	76.1	2 1/2	76.1	77.0	13 mm	C0-13X076	28	19mm	C0-19X076	18
3	3 1/8	80			81.0	13 mm	C0-13X080	26	19mm	C0-19X080	16
			3	88.9	90.0	13 mm	C0-13X089	20	19mm	C0-19X089	16
3 1/2	3 2/3	93			94.0	13 mm	C0-13X093	18	19mm	C0-19X093	16
4	4 1/4	108			109.0	13 mm	C0-13X108	16	19mm	C0-19X108	12
			4	114.3	115.5	13 mm	C0-13X114	14	19mm	C0-19X114	10

... product range of tubes continued overleaf

- 13 mm Delivery quoted on request from 80mm to 114mm
- 19 mm Delivery quoted on request from 80mm to 114mm.
- All Class O Armaflex tubes available as SLIT items. Add 5 p/m net after discount has been applied. For ordering add -SLT to above codes (e.g. CO-19X010-SLT)
- Items marked with # - delivery: 10 working days



CLASS 0 ARMAFLEX Tubes

Length 2 m, colour black

Class 0 Armaflex®

Copper pipe Cu			Iron and steel pipe Fe			25 mm Nominal thickness				32 mm Nominal thickness			
NB inch	Nom OD inch	Nom OD mm	NB inch	Nom OD mm	Min ID mm	Nom Thick- ness	Reference	m / carton		Nom thick- ness	Reference	m / carton	
3/8	1/2	12			12.5	25 mm	C0-25X012	50					
1/2	5/8	15			16.0	25 mm	C0-25X015	48		32 mm	C0-32X018 ⁽¹⁾	32	
5/8	3/4				20.0	25 mm	C0-25X020	40					
3/4	7/8	22	1/2	21.3	22.5	25 mm	C0-25X022	40		32 mm	C0-32X022	32	
1	1 1/8	28	3/4	26.9	29.0	25 mm	C0-25X028	32		32 mm	C0-32X028	24	
1 1/4	1 3/8	35	1	33.7	35.5	25 mm	C0-25X035	24		32 mm	C0-32X035	22	
1 1/2	1 5/8	42	1 1/4	42.4	43.5	25 mm	C0-25X042	24		32 mm	C0-32X042	16	
			1 1/2	48.3	49.0	25 mm	C0-25X048	22		32 mm	C0-32X048	12	
2	2 1/8	54			55.0	25 mm	C0-25X054	18		32 mm	C0-32X054	12	
			2	60.3	61.0	25 mm	C0-25X060	18		32 mm	C0-32X060	10	
2 1/2	2 5/8	67			68.0	25 mm	C0-25X067	16		32 mm	C0-32X067 #	12	
2 13/16	3	76.1	2 1/2	76.1	77.0	25 mm	C0-25X076	14		32 mm	C0-32X076	8	
3	3 1/8	80			81.0	25 mm	C0-25X080	12					
			3	88.9	90.0	25 mm	C0-25X089	12		32 mm	C0-32X089	6	
3 1/2	2 2/3	93			94.0	25 mm	C0-25X093	12					
4	4 1/4	108			109.0	25 mm	C0-25X108	8					
			4	114.3	115.5	25 mm	C0-25X114	8		32 mm	C0-32X114	4	

CLASS 0 ARMAFLEX DHCG Compliant Range

Meets Building Regulations Part L (England & Wales) domestic compliance requirements; Length 2 m, colour black



Copper pipe Cu		Max. Permissible Heat loss ⁽¹⁾	Insulation Thickness	Reference	m / carton
Nom OD inch	Nom OD mm				
	8	7.06	13 mm	C0-13X010	188
3/8	10	7.23	13 mm	C0-13X010	188
1/2	12	7.35	19 mm	C0-19X012	92
5/8	15	7.89	19 mm	C0-19X015	78
7/8	22	9.12	25 mm	C0-25X022	40
1 1/8	28	10.07	25 mm	C0-25X028	32
1 3/8	35	11.08	25 mm	C0-25X035	24
1 5/8	42	12.19	25 mm	C0-25X042	24
2 1/8	54	14.12	32 mm	C0-32X054	12

- 25 mm Delivery quoted on request from 80mm to 114mm.
- (1) The additional 3mm tolerance enhancing the sleaving over
- Items marked with # - delivery quoted on request

CLASS 0 ARMAFLEX 15m Coils

Coil length 15 m, every coil in easy carry bag, colour black

Copper pipe Cu			Iron and steel pipe Fe		Min ID mm	6 mm Nominal thickness			9 mm Nominal thickness		
NB inch	Nom OD inch	Nom OD mm	NB inch	Nom OD mm		Reference	Coils/ carton	m / carton	Reference	Coils/ carton	m / carton
	1/4	6			6.5	C0-06X006/E-15	11	165			
	1/4	6			7.0				C0-09X006/E-15	8	120
	3/8	10			10.5	C0-06X010/E-15	9	135	C0-09X010/E-15	7	105
3/8	1/2	12			12.5	C0-06X012/E-15	8	120	C0-09X012/E-15	7	105
1/2	5/8	15			16.0	C0-06X015/E-15	7	105	C0-09X015/E-15	6	90
5/8	3/4				20.0	C0-06X020/E-15	6	90	C0-09X020/E-15	6	90
3/4	7/8	22	1/2	21.3	22.5	C0-06X022/E-15	6	90	C0-09X022/E-15	5	75
1	1 1/8	28	3/4	26.9	29.0	C0-06X028/E-15 #	5	75	C0-09X028/E-15	4	60

Copper pipe Cu			Iron and steel pipe Fe		Min ID mm	13 mm Nominal thickness					
NB inch	Nom OD inch	Nom OD mm	NB inch	Nom OD mm		Reference	Coils/ carton	m / carton			
	1/4	6			9.5	C0-13X006/E-15	7	105			
	3/8	10			10.5	C0-13X010/E-15	6	90			
3/8	1/2	12			12.5	C0-13X012/E-15	6	90			
1/2	5/8	15			16.0	C0-13X015/E-15	5	75			
5/8	3/4				20.0	C0-13X020/E-15	5	75			
3/4	7/8	22	1/2	21.3	22.5	C0-13X022/E-15	4	60			
1	1 1/8	28	3/4	26.9	29.0	C0-13X028/E-15	4	60			

CLASS 0 ARMAFLEX Flat Sheet

Colour black, skin on both sides

Reference	Insulation thickness mm	Width m	Length m	Carton content m ²
C0-09-99	9	0.5	2	13
C0-13-99	13	0.5	2	9
C0-19-99	19	0.5	2	7
C0-25-99	25	0.5	2	5
C0-32-99	32	0.5	2	4

CLASS 0 ARMAFLEX Flat Sheet Self-Adhesive

Colour black, with self-adhesive backing

Reference	Insulation thickness mm	Width m	Length m	Carton content m ²
C0-09-99/A	9	0.5	2	13
C0-13-99/A	13	0.5	2	9
C0-19-99/A	19	0.5	2	7
C0-25-99/A	25	0.5	2	5
C0-32-99/A	32	0.5	2	4

... product range of sheets continued overleaf

CLASS 0 ARMAFLEX Continuous Sheet



Colour black, skin on both sides

Reference	Insulation thickness mm	Width m	Length m	Carton content m ²	
AC-03-99/E	3	1	30	30	
AC-06-99/E	6	1	15	15	
C0-F-99/E	9	1	10	10	
C0-H-99/E	13	1	8	8	
C0-M-99/E	19	1	6	6	
C0-R-99/E	25	1	4	4	
C0-T-99/E	32	1	3	3	

CLASS 0 ARMAFLEX Continuous Sheet Self-Adhesive



Colour black, with self-adhesive backing

Reference	Insulation thickness mm	Width m	Length m	Carton content m ²	
AC-06-99/EA	6	1	15	15	
C0-F-99/EA	9	1	10	10	
C0-H-99/EA	13	1	8	8	
C0-M-99/EA	19	1	6	6	
C0-R-99/EA	25	1	4	4	
C0-T-99/EA	32	1	3	3	

CLASS 0 ARMAFLEX Tape



Reference	Thickness mm	Length m	Width mm	Carton content	
C0-TAPE	3	15	50	12 rolls	

- All flat and continuous sheets with self-adhesive backing: delivery quoted on request