

Celotex CW3000

Introduction

Celotex CW3000 is an insulation board aimed specifically at partial fill cavity wall applications.

With low emissivity foil facings, CW3000 is manufactured from rigid polyisocyanurate (PIR) uniquely reinforced with glass fibre (except CW3025, CW3030 & CW3100) using a blend of blowing agents that have zero ozone depletion potential (zero ODP) and low global warming potential (GWP).

With Celotex CW3000 you are specifying an insulation board that:

- Is easy to fit between wall ties using cavity tie clips for retention
- Comes in thicknesses ranging from 25mm-100mm
- Features a good reaction to fire performance when measured in accordance with new European standards
- Comes in conveniently sized boards for installation between cavity wall ties
- Includes low emissivity foil facings giving improved thermal insulation with cavity air spaces
- Has excellent dimensional stability
- Provides reliable long term energy savings for buildings

Applications

Celotex CW3000 is specifically for use in partial-fill cavity wall applications.

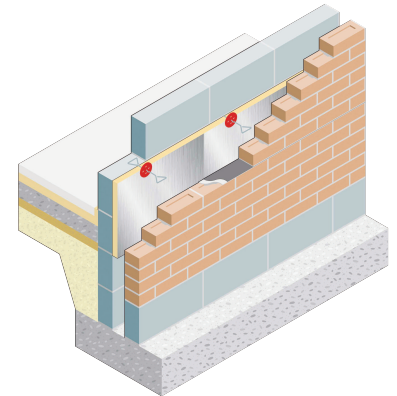
Specification clause

The insulation shall be Celotex CW3000 _____mm thick comprising a polyisocyanurate rigid foam insulation core with low emissivity aluminium foil facings on both sides. CW3000 is CFC/HCFC free with zero ODP and low GWP. CE marking compliance to BS EN 13165:2001 and manufactured in accordance with quality management systems with BS EN ISO 9001:2001 by Celotex Limited. All products must be installed in accordance with instructions issued by Celotex Limited.

Celotex CW3000 Technical Data

Product Code	Thickness (mm)	R-value (m ² K/W)	Weight (kg/m ²)
CW3025	25	1.05	0.88
CW3030	30	1.30	1.02
CW3035	35	1.50	1.17
CW3040	40	1.70	1.31
CW3045	45	1.95	1.45
CW3050	50	2.15	1.59
CW3055	55	2.35	1.73
CW3060	60	2.60	1.93
CW3065	65	2.80	2.07
CW3070	70	3.00	2.22
CW3075	75	3.25	2.36
CW3080	80	3.45	2.50
CW3090	90	3.90	2.79
CW3100	100	4.30	3.29

We know **insulation** inside and out



Celotex CW3000 in a masonry cavity wall application

Celotex and Sustainability

Celotex' environmental profile has been independently assessed by the BRE.

The results of this assessment show that Celotex has the lowest environmental impact of any PIR manufacturer.

For a copy of the certificate and for further information on Celotex' position including their new sustainability statement, please visit the sustainability pages of the website at celotex.co.uk



Physical Properties

	Method	CW3000
Compressive strength	BS EN 826	≥120kPa
Dimensional stability	BS EN 1604	DS(TH)8
Water vapour resistance	BS EN 12086: Method B	>150 MNs/g
Thermal conductivity	BS EN 12667	0.023 W/mK
Reaction to fire	BS EN 13501	Euroclass D Except 25-45mm & 100mm = Euroclass F
Surface spread of flame	BS 476-7	Class 1

Typical U-values

U-values will vary depending on application. To calculate a specific U-value, please refer to our online U-value calculator at celotex.co.uk

Installation Guidelines

For full details of the installation of Celotex CW3000, please refer to the 'application' pages of the website at celotex.co.uk and select the Masonry Cavity Walls application datasheet.

Further information

If you wish to contact Celotex, please visit celotex.co.uk and click on the 'contact us' page.

For information regarding storage and handling of Celotex products, or for Health & Safety advice, please refer to the 'literature' pages of the website at celotex.co.uk

Celotex has a policy of continuous product development and reserves the right to alter product designs or specifications without prior notice.

*Calls to our Technical Advisory Service are charged at 30p per minute from a BT landline and lines are open Monday - Friday from 8.00am - 5.15pm. Details and pricing are correct at date of publication - March 2008.

Celotex Limited
Lady Lane Industrial Estate,
Hadleigh, Ipswich
Suffolk IP7 6BA

T: 0901 996 0100*
W: celotex.co.uk

Registered Office:
Lady Lane Industrial Estate
Hadleigh, Ipswich, Suffolk IP7 6BA
Registered in England No 2183896